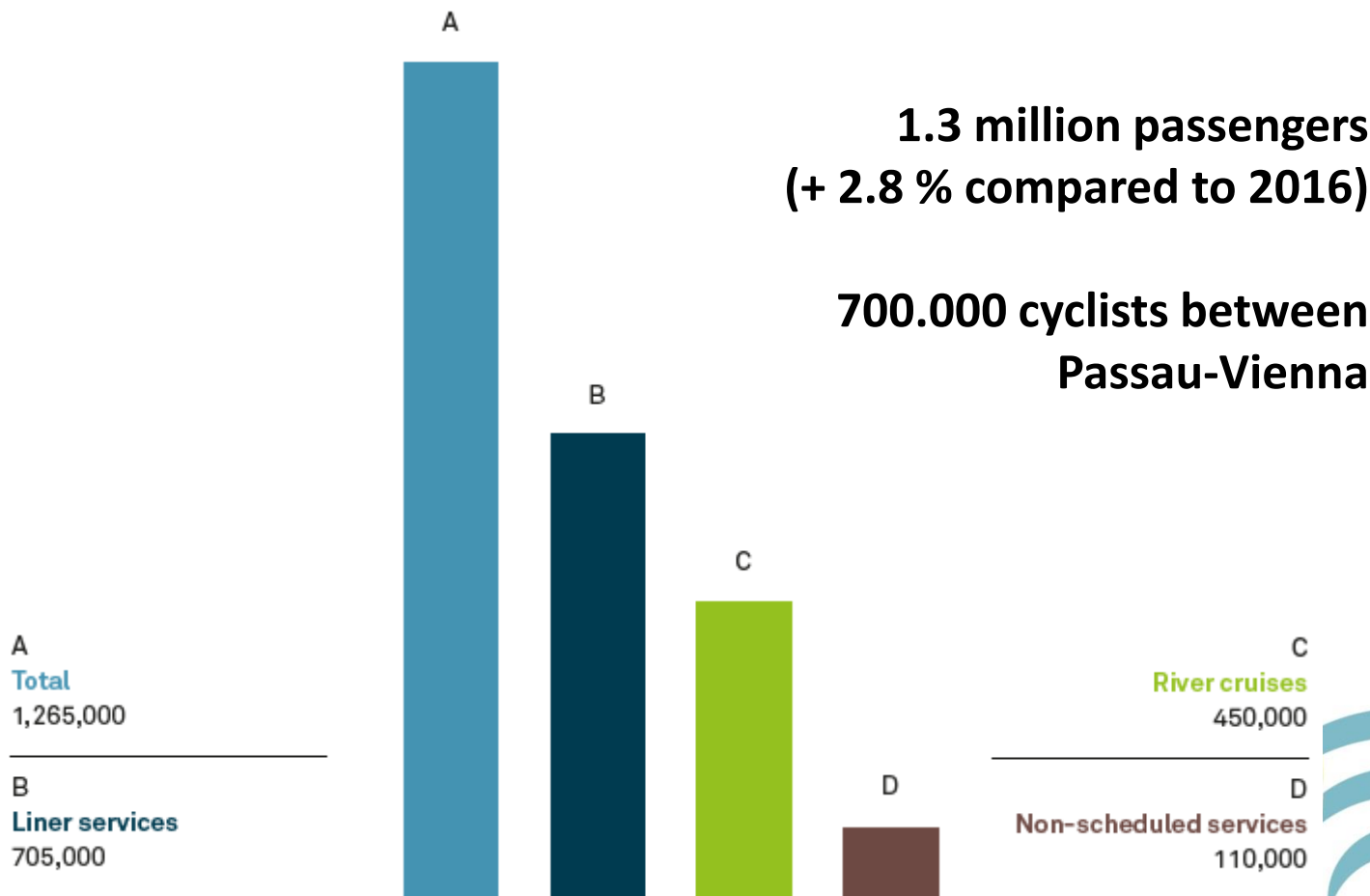


## Danube Transnational Programme Danube STREAM

Project co-funded by European Union funds (ERDF, IPA)



# Passengers on the Austrian Danube 2017



# Potentials for passenger shipping along the Danube

- **Danube** offers many touristic highlights along its 2,415 navigable kilometres
- Ever **increasing interest** in daily cruises and several-day river cruises
- High **expectations and demands of customers** towards river cruises (e.g. available services, facilities on board and on shore, touristic programme)



## A booming industry ...

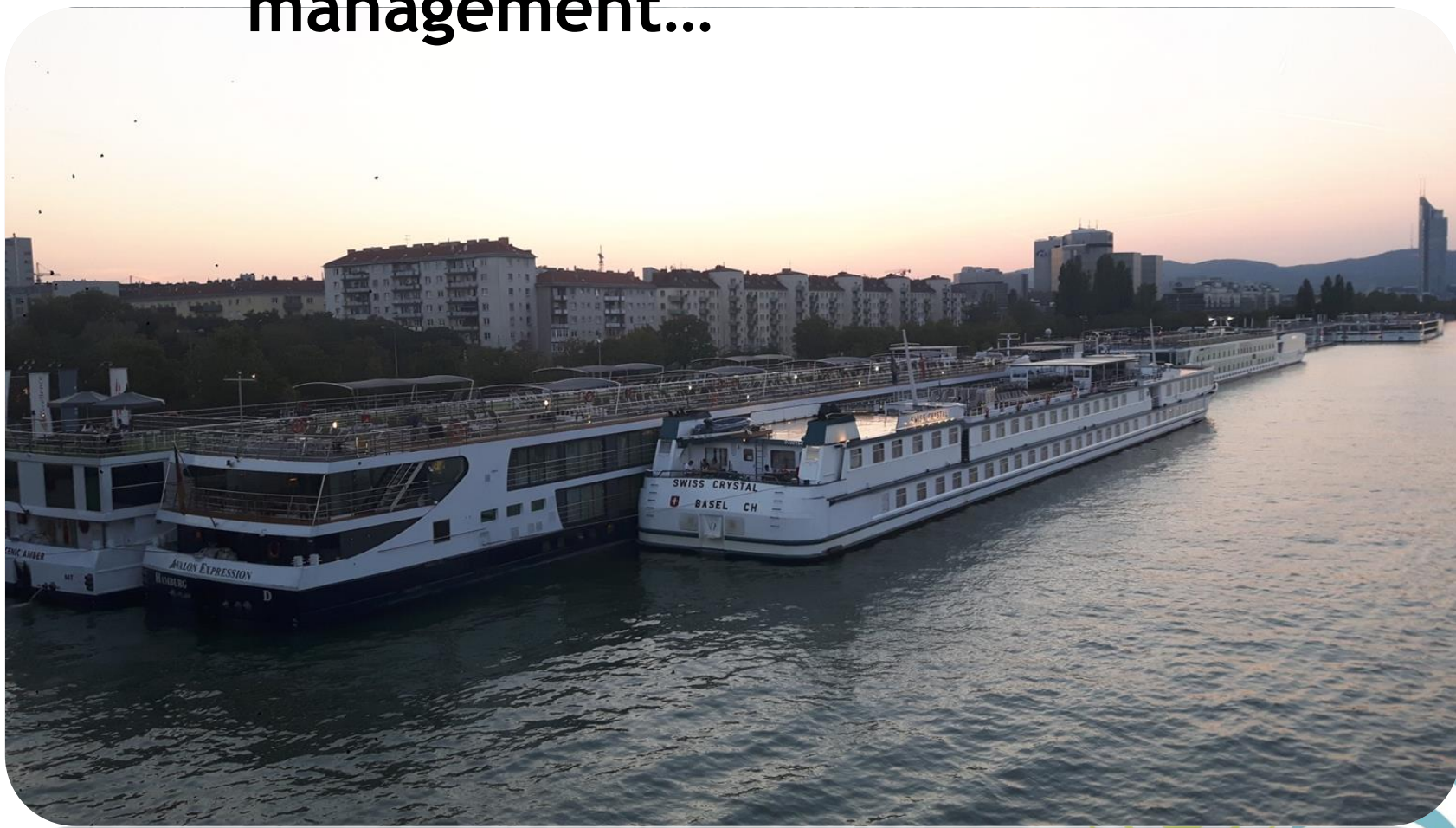


Photo credits: Avalon Waterways, Hafen Wien

## ... that needs targeted measures

- To provide stable fairway conditions
  - sufficient fairway depth/width during low water season
  - and sufficient bridge clearance under high water conditions
- To reduce administrative barriers for navigation

# Consequences of low water combined with insufficient waterway management...



**22<sup>nd</sup> August 2018** : Passenger vessels queuing in Vienna because navigational bottlenecks in Hungary could not be passed

# 10 riparian states / 10 states in charge of waterway maintenance

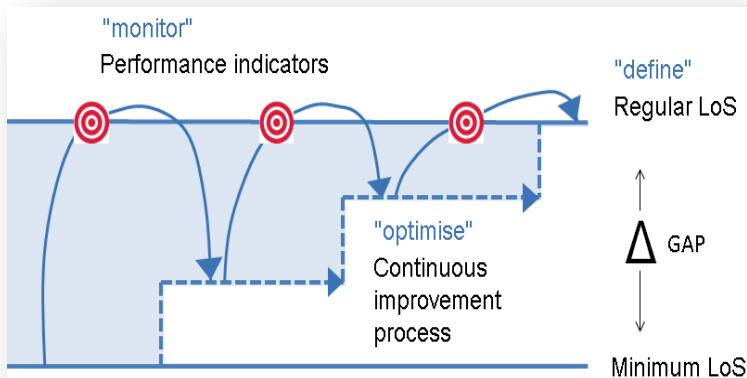
- 7 EU Member States/3 non-EU Member States
- Waterway rehabilitation and maintenance is and will remain a national responsibility
- Waterway users need stable fairway conditions and a continuous level of service
- The quality of the Danube corridor is as strong as its weakest link



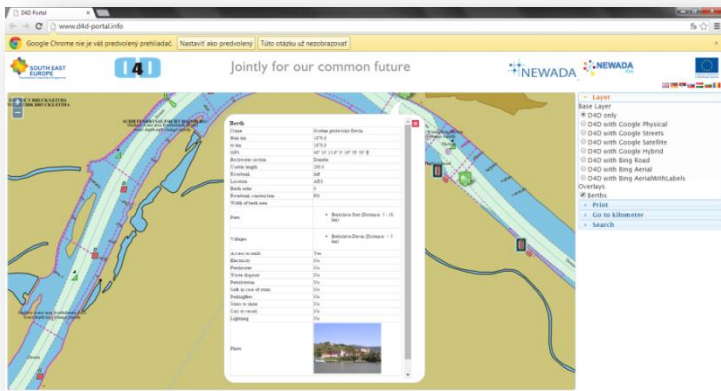
- Corridor approach in waterway maintenance is essential

# Danube STREAM facilitates improved services for passenger transport...

... by agreeing on common levels and performance indicators



... by developing digital and electronic information services

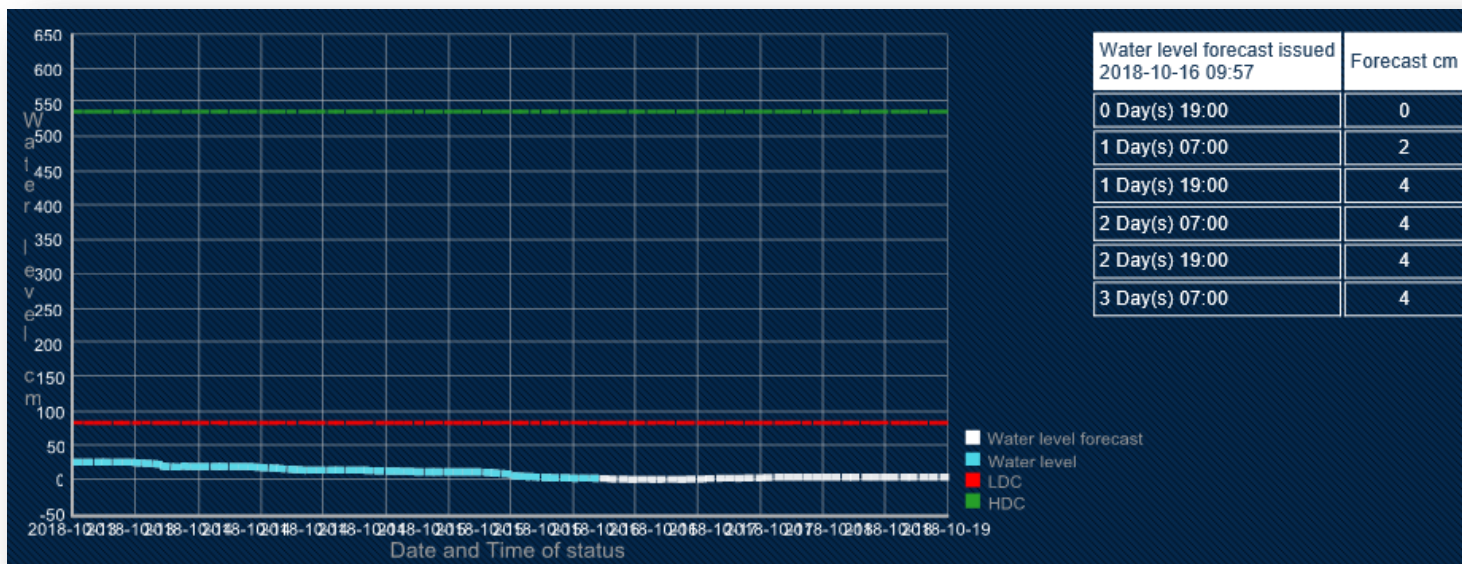


... by exchanging best practices in fairway maintenance and management

# Danube STREAM facilitates improved services for passenger transport...

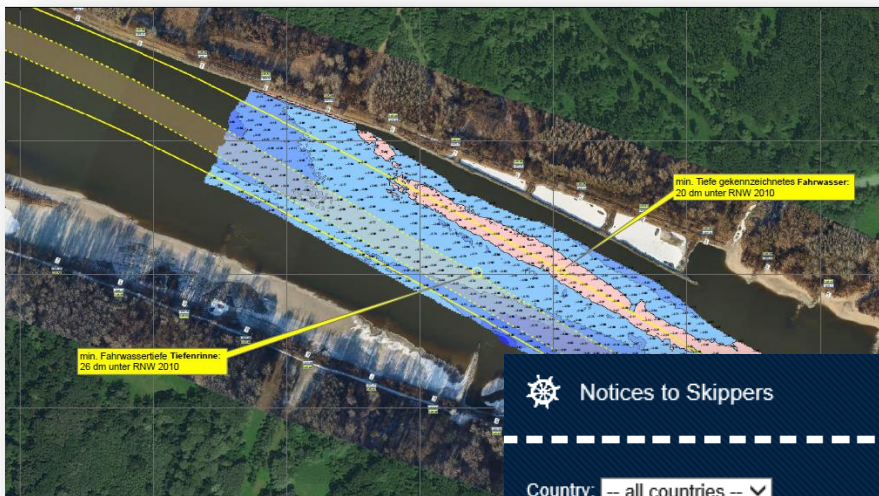
... by providing up-to-date fairway information for waterway users:

## Water level information and forecast



# Danube STREAM facilitates improved services for passenger transport...


## Shallow section information



## Notices to skippers

 Notices to Skippers 

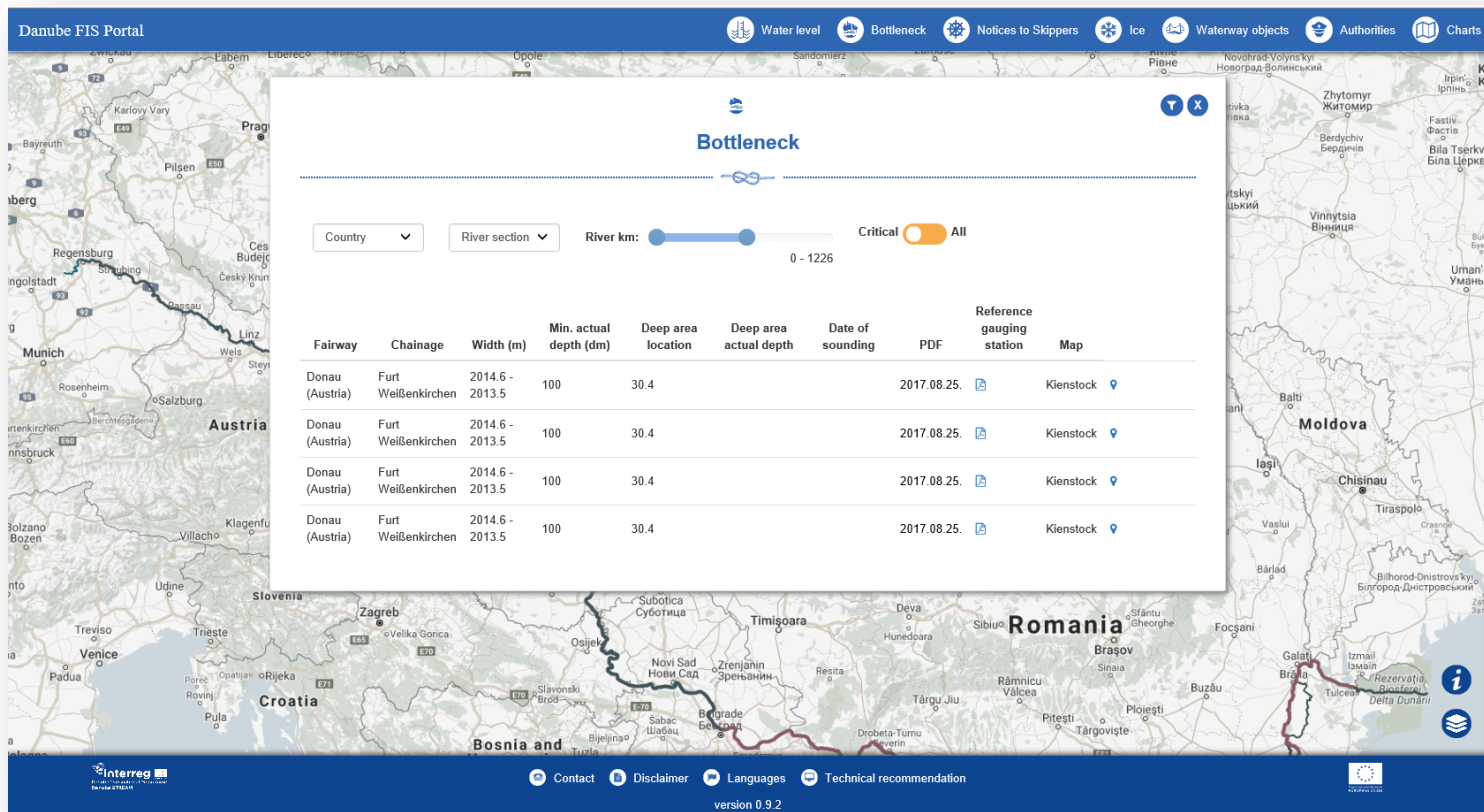
Country:

Detail	Message ID	Country	Valid from	Subject	Reasons	Location (Rkm)
	2018 / 119	AT	2018.10.15 - 2018.12.10	Announcement	work	---
	2018 / 118	AT	2018.10.22 - 2018.10.24	Announcement	dredging	2147.4 - 2147.0
	2018 / 117	AT	2018.10.18 - 2018.10.22	Announcement	dredging	2124.0 - 2123.8
	2018 / 116	AT	2018.08.10 - 2018.10.18	Announcement	dredging	2123.6 - 2123.1
	2018 / 114	AT	2018.10.24 - 2018.10.25	Announcement	work	0.6 - 0.8
	2018 / 113	AT	2018.10.08 - 2018.10.19	Announcement	work	---
	2018 / 112	AT	2018.09.26 - 2018.10.31	Announcement	info service	1932.8 - 1924.9



# Danube STREAM facilitates improved services for passenger transport...

Easy access through [www.danubeportal.com](http://www.danubeportal.com)



**Bottleneck**

Country:  River section:  River km:  0 - 1226 Critical:  All

Fairway	Chainage	Width (m)	Min. actual depth (dm)	Deep area location	Deep area actual depth	Date of sounding	PDF	Reference gauging station	Map
Donau (Austria)	Furt Weißenkirchen	2014.6 - 2013.5	100	30.4		2017.08.25.	<a href="#">PDF</a>	Kienstock	<a href="#">Map</a>
Donau (Austria)	Furt Weißenkirchen	2014.6 - 2013.5	100	30.4		2017.08.25.	<a href="#">PDF</a>	Kienstock	<a href="#">Map</a>
Donau (Austria)	Furt Weißenkirchen	2014.6 - 2013.5	100	30.4		2017.08.25.	<a href="#">PDF</a>	Kienstock	<a href="#">Map</a>
Donau (Austria)	Furt Weißenkirchen	2014.6 - 2013.5	100	30.4		2017.08.25.	<a href="#">PDF</a>	Kienstock	<a href="#">Map</a>

Contact | Disclaimer | Languages | Technical recommendation  
 version 0.9.2

Complete relaunch of portal coming soon!